

# WP5: Disability Awareness of health professionals

Prof. Alexios Benos  
Assistant Prof. Emmanouil Smyrnakis

# Contents of the presentation

- **Presentation of Laboratory** of Primary Health Care, General Practice and Health Services Research.
- **SMiLe Work Package 5:**
  - Disability Awareness of health professionals
  - WP5 Deliverables

# Laboratory of Primary Health Care, General Practice and Health Services Research.

Main fields of expertise:

Primary Health Care and  
General Practice

Public  
Health

Health  
Policy

# SMiLe Work Package 5


# Disability Awareness of health professionals



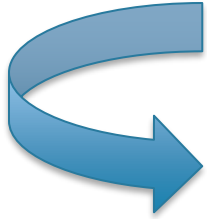
Attitudes of the nursing and healthcare staff can create major barriers to healthcare for persons with disabilities (Sharby, Martire et Iversen, 2015).

There is a paucity of literature on knowledge, attitudes, behaviour and education of healthcare professionals concerning disability issues in Greece and Bulgaria.

# Disability Awareness of health professionals

 The existing studies highlight both the lack of relevant knowledge, education and the poor attitudes of students and health care professionals towards adults and children with disabilities (Kritsotakis et al., 2017; Matziou et al., 2009; Velonaki et al., 2015).


# The SMiLe project's WP5

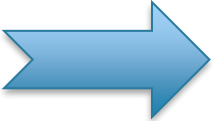


The main aim of our project is the development of an educational program focusing on disability issues for Primary Health Care Practitioners (PHCP) in order to overcome discriminations faced by disabled persons.

# The SMiLe project's WP5

Our objective is:

 To offer PHCP the opportunity to improve knowledge on particular needs of disabled persons (visual, hearing, mobility).

 To enhance the practitioners' communication skills focusing on the specific needs of each disability.



# **The SMiLe project's WP5**

## **D. 5.2. Joint PHC Practitioners' Training Scheme**

### **D. 5.2.2 Training Center for PHP Practitioners**

### **D. 5.2.3 PHC Practitioners' Training Program**

### **D. 5.2.4 Toolbox for Equal Health Provision**

# The SMiLe project's WP5

## 5.1 Joint PHC Practitioners' Training Scheme

# The SMiLe project's WP5

## 5.1 Joint the PHC Practitioners' Training Scheme.

Training at  
AUTH-Thessaloniki

Training seminars in  
situ across the cross  
border area.

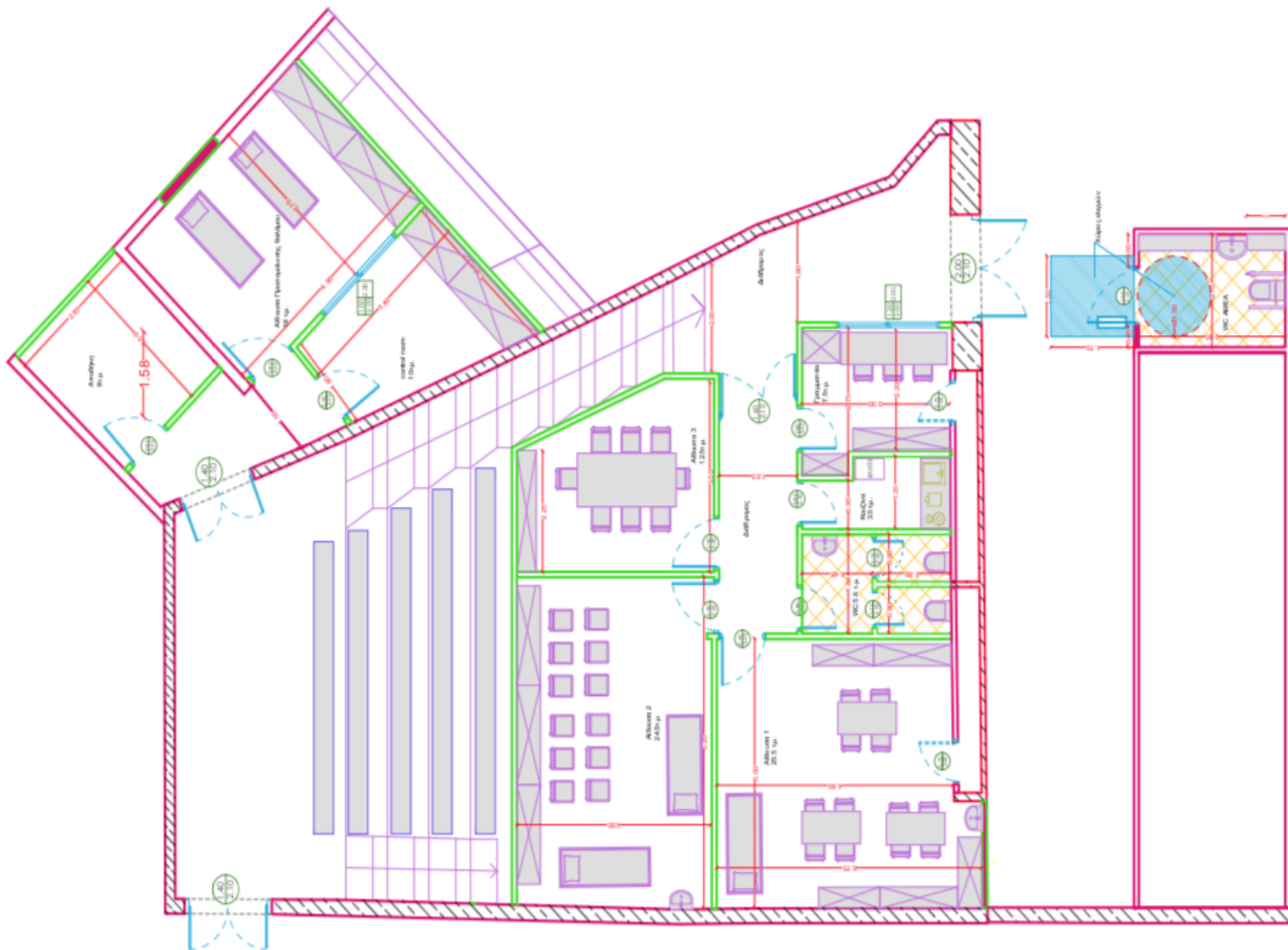
## D 5.2.2 Training Center for PHP Practitioners

New educational environment and educational material

Creation of a new, accessible, Clinical Skills Educational Centre

# The SMiLe project's WP5

## D 5.2.2 Training Center for PHP Practitioners



# Manikins and part-task trainers available in the Educational Center

Educational subject	Description
<b>Patient Care and transportation</b>	<u>Patient Care Simulator</u>
<b>Vital signs measurement</b>	<u>Blood Pressure Assessment Simulator</u>
<b>Clinical examination</b>	Ear Examination Simulator Eye Examination Simulator Rectal Examination Trainer
<u>Venepuncture</u>	<u>Venepuncture Pad</u>
<b>Injections</b>	<u>Injection Trainer</u>
<b>Bladder catheterisation</b>	<u>Advanced Catheterization Trainer</u>
<b>Wound suturing</b>	<u>Wound Closure Pad</u>
<b>Airway management</b>	CPR Prompt Complete AED Training System
<b>Nasogastric tube insertion</b>	<u>Tube Feeding Simulator</u>



## D. 5.2.3 PHC Practitioners' Training Program

Equal access in  
Healthcare

Training on basic  
clinical skills



## D. 5.2.3 PHC Practitioners' Training Program

Qualitative  
Research

Educational  
Curriculum  
Improvement

Creation of  
new  
educational  
material

## 5.2.4 Toolbox for Equal Health Provision

Recommendations and guidelines on how to foster access to primary health care.

- Online, as part of project's website
- Synthesis of the whole project

Thank you!